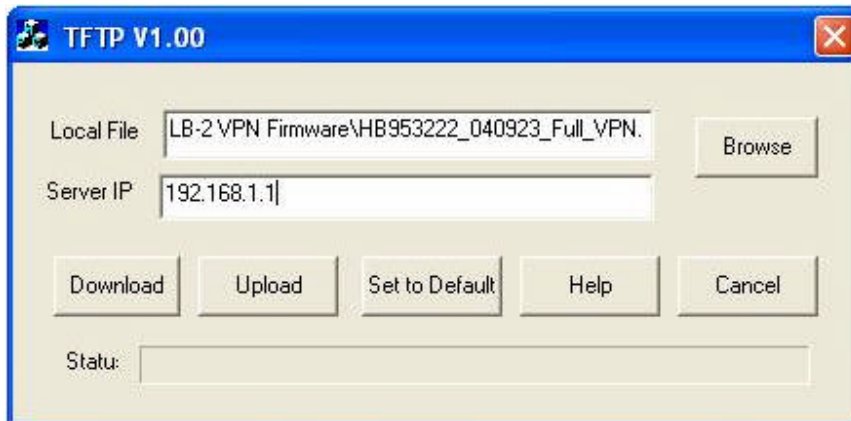


How to use TFTP utility

- ?? Open the TFTP utility
- ?? Under Local File, click on the browse button and navigate to the file (firmware version)
- ?? Under Server IP type in the LAN IP address of the LB-2 VPN
- ?? Hit Download

See the screenshot below:



Once you have successfully installed the firmware you can get back into the LB-2 by going to <http://192.168.1.1> on your browser.