

Official Tech Documents
The better way to get your HotBrick product up and running

Firewall HotBrick SoHo 401 VPN

How To

How To do Port Forwarding on the SoHo 401 VPN

USA

7243 NW 54th Street
33166
Miami, FL
www.hotbrick.com
support@hotbrick.com

EUROPE

Generatorstraat 26
Hengelo (Ov), 7556 RC
Amsterdam - Netherlands
www.hotbrick.nl
support@hotbrick.nl

BRAZIL

Francisco Tramontano, 100
05686-010
São Paulo/SP
www.hotbrick.com.br
suporte@hotbrick.com.br

Port Forwarding on the 401VPN

The purpose of this document is to describe how you can use port forwarding to a server that is behind the 401VPN firewall in the LAN. You can use port forwarding on the 401VPN in order to access a server from the internet.

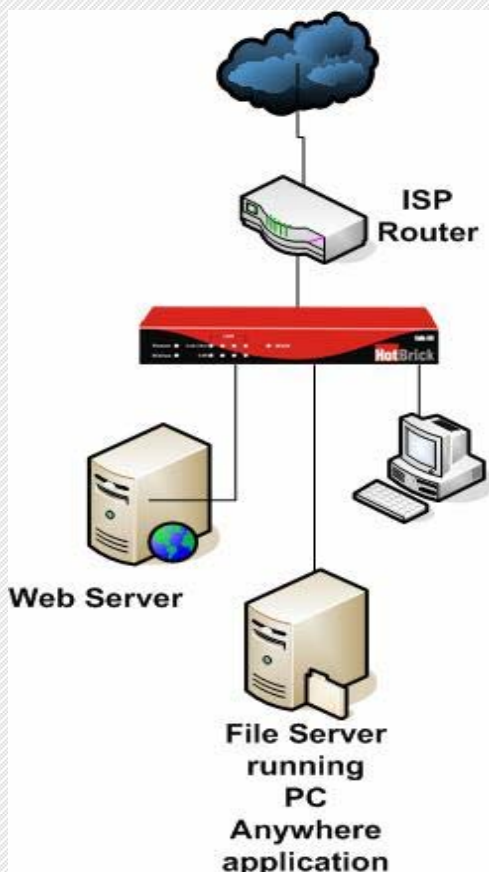


Figure 1 - 401 VPN Network with Virtual Servers

For common services such as:

- Web
- FTP
- E-Mail (POP3)
- E-Mail (SMTP)
- DNS
- Telnet
- PPTP

You will have to use the Virtual Servers. In order to set this up please go to:

1. Click on the Internet Link
2. Click on Virtual Servers
3. Select one of the servers in the selection box, example Web
4. Under Properties make sure that the enable box is checked
5. Under PC (server) make sure your select the IP address of the server that you will apply the

- service to.
- Once you have finished click on the SAVE button.

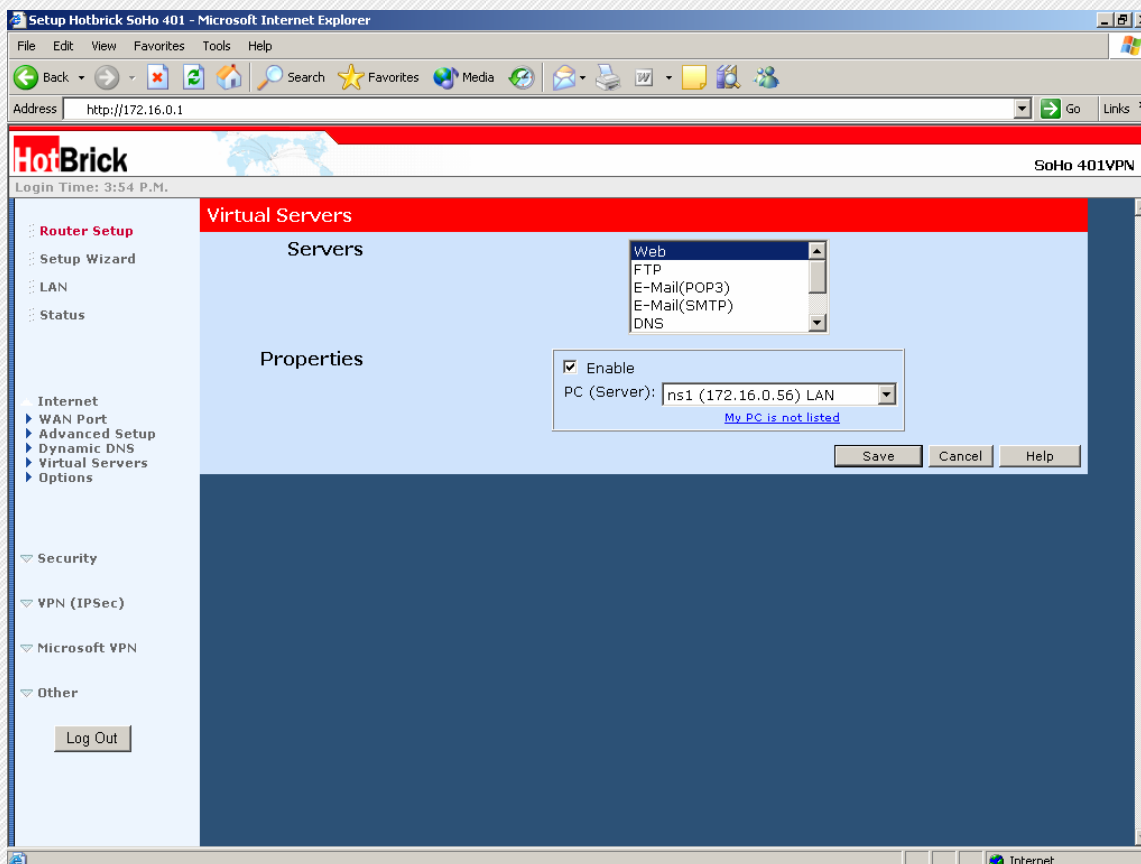


Figure 2 - Virtual Servers

For services that are not listed in the Virtual Servers section, you will have to create the service and apply the appropriate firewall rule. Below we will create a firewall rule to port forward the PC Anywhere ports.

- Log into 401 VPN
- Click on security
- Click on services
- Go to add new service
- PC anywhere needs 2 ports – we will do 1 and you can do other: 5631 & 5632 are the 2 ports
- Go to admin service
- Type in PCANYWHERE where it says name
- Make sure type is TCP
- Start point is 5631
- Finish port is 5632
- Hit **Add** button

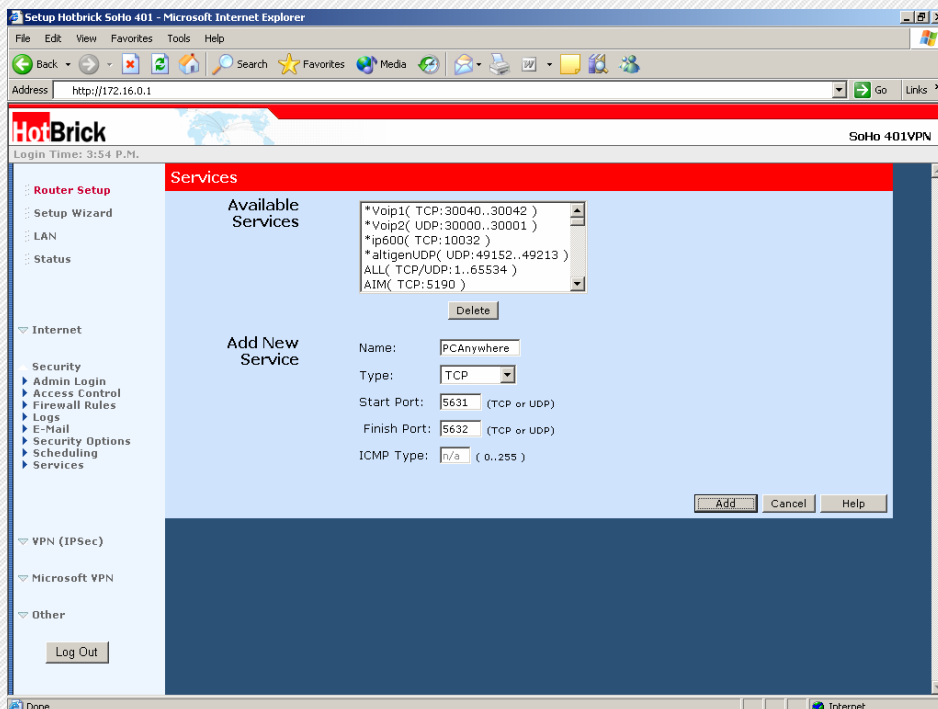


Figure 3 - Creating Services

12. Again under Security link that says firewall rules
13. Under **View Rules** for make sure that **WAN → LAN** is selected
14. Click add
15. See Figure 4

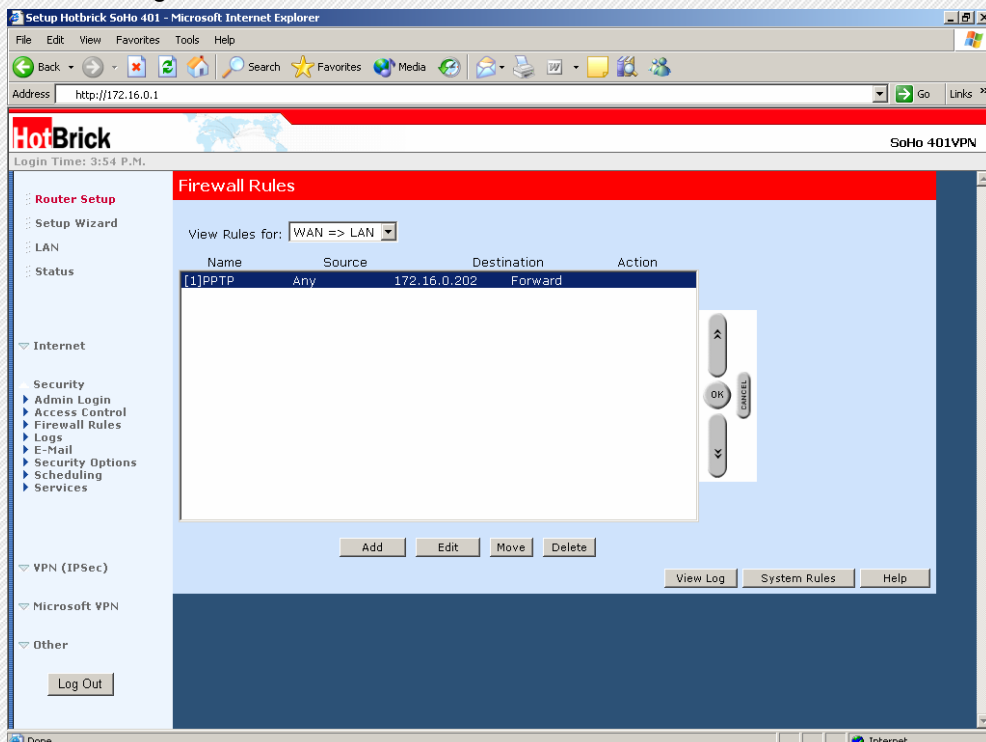


Figure 4 - Firewall rules

16. Name this firewall rule – ex. PCANYWHERE again
17. Type – WAN to LAN (WAN → LAN)
18. Source IP should be as ANY
19. Everything under Source IP should be left as is
20. Go to Destination IP
21. Id type = single address ex: 172.16.0.222
22. Put Internal LAN IP address of the PCAnywhere server or computer
23. Make sure service is PCAnywhere (the service he created in services section)
24. For Action is forward
25. For log you can log it or not your choice
26. When you are done hit SAVE

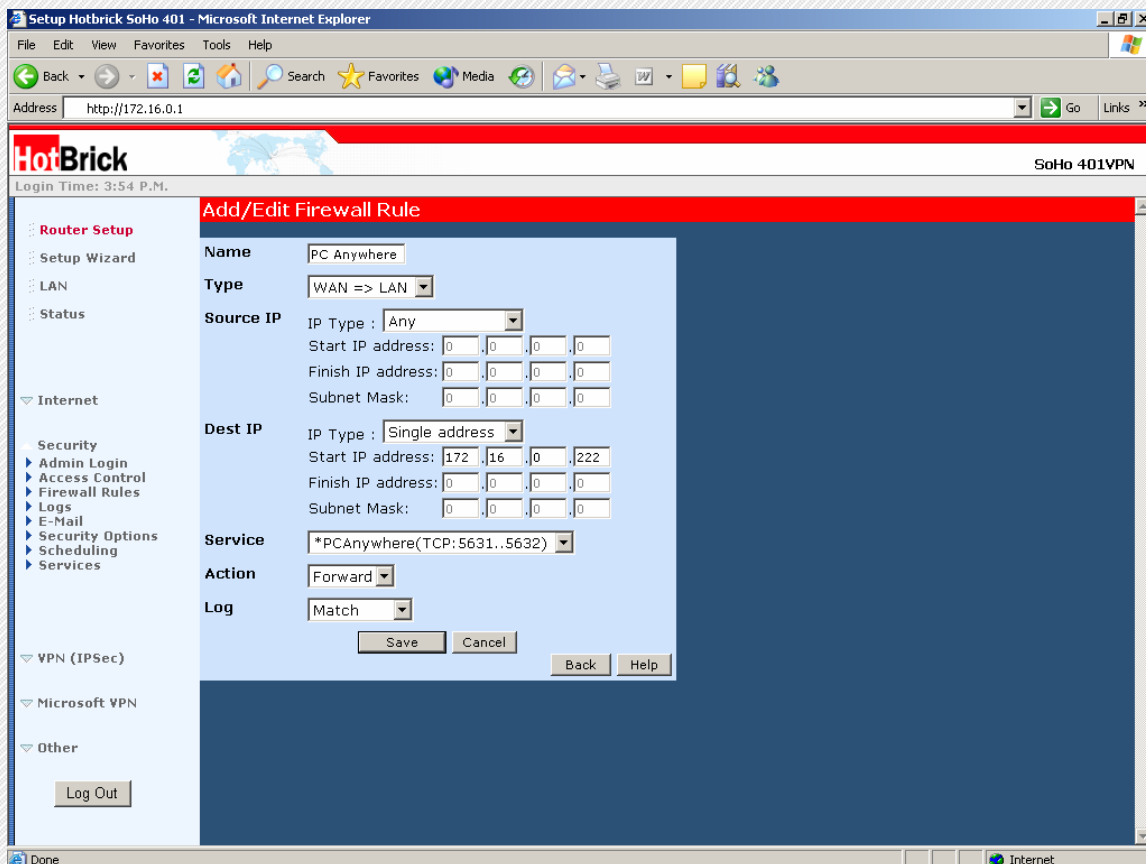


Figure 5 - Creating a Firewall Rule

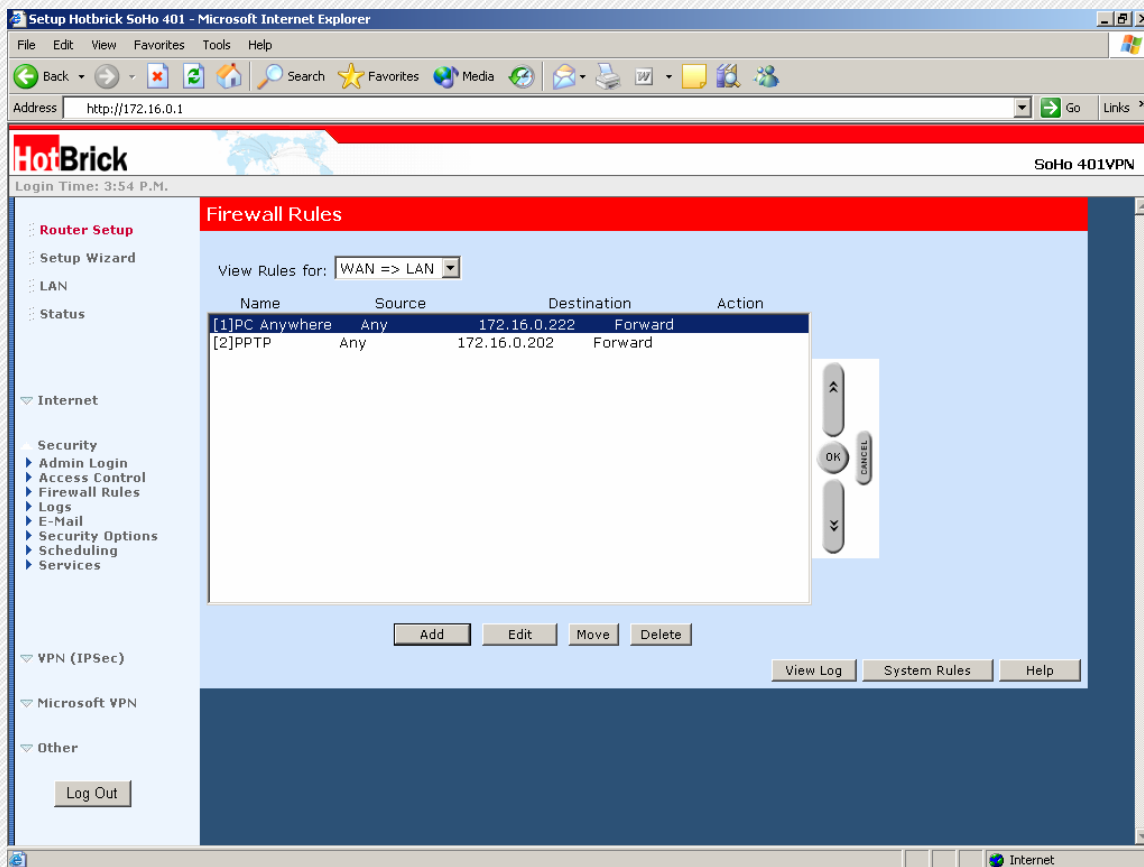


Figure 6 - Firewall rule created