

**Official Tech Documents**  
The better way to get your HotBrick product up and running

## Firewall HotBrick VPN 800/2

## How To

How To Remotely manage the VPN 800/2

### USA

7243 NW 54th Street  
33166  
Miami, FL  
[www.hotbrick.com](http://www.hotbrick.com)  
[support@hotbrick.com](mailto:support@hotbrick.com)

### EUROPE

Generatorstraat 26  
Hengelo (Ov), 7556 RC  
Amsterdam - Netherlands  
[www.hotbrick.nl](http://www.hotbrick.nl)  
[support@hotbrick.nl](mailto:support@hotbrick.nl)

### BRAZIL

Francisco Tramontano, 100  
05686-010  
São Paulo/SP  
[www.hotbrick.com.br](http://www.hotbrick.com.br)  
[suporte@hotbrick.com.br](mailto:suporte@hotbrick.com.br)

## Remotely managing the VPN 800/2

The hotbrick VPN 800/2 can be remotely accessed from every IP address on the internet. Also you can restrict the addresses from which you can manage the unit.

- Go to "Advanced Setup"
- "Advanced Feature"
- Enable "Remote Web-based setup"
- The default port number setting is 8080. It is better to use another port, such as 53000, because 8080 is a well known port and is more likely to be scanned.
- If you leave the allowed IP range as it is, it acts as a wildcard and every IP address is allowed 0.0.0.0 ~ 0.0.0.0
- If you enter 82.168.118.231 ~ 82.168.118.231 you can reach it from this IP only.
- If you enter 82.168.118.231 ~ 82.168.118.239 you can reach it from these IP's only.
- Press "submit"

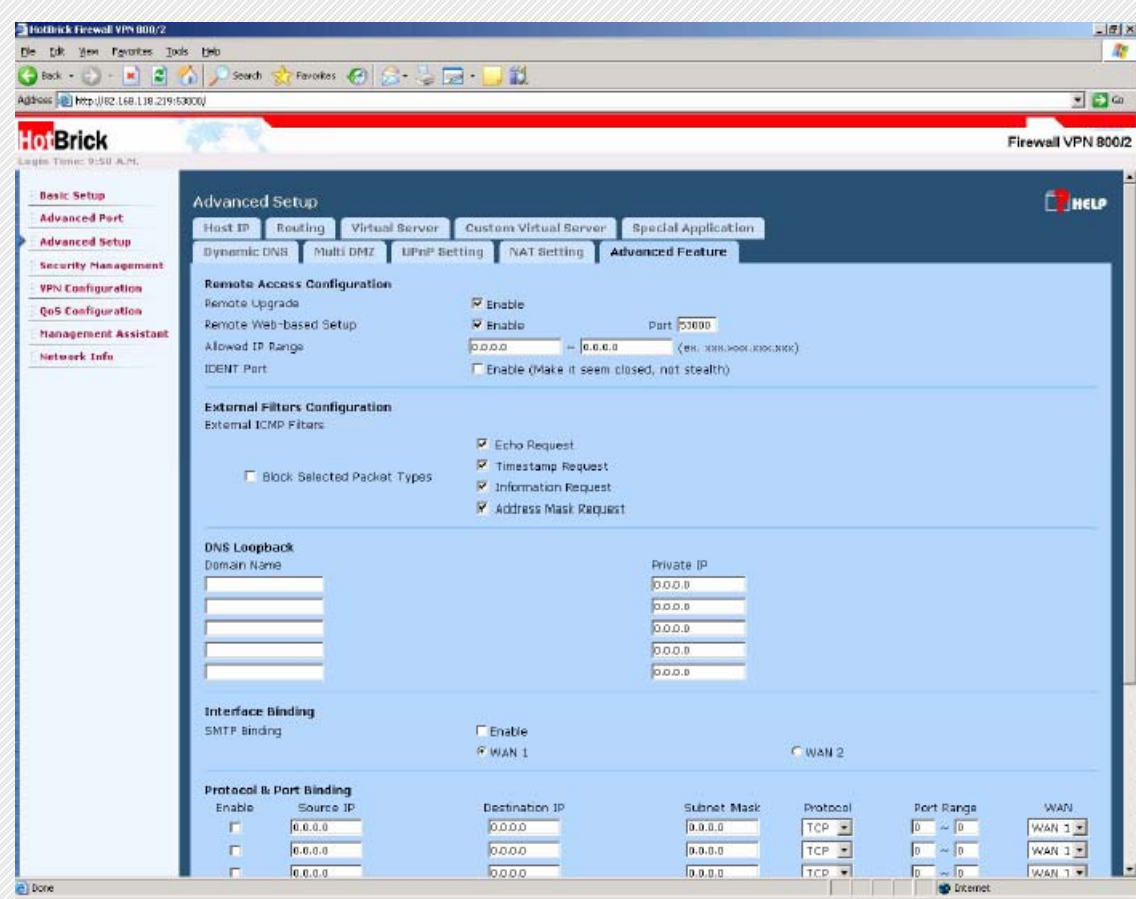


Fig. 1: Remote Access Configuration