

Official Tech Documents
The better way to get your HotBrick product up and running

Firewall HotBrick VPN 800/2

How To

How to use the Virtual Server feature on the HotBrick VPN 800/2

USA

7243 NW 54th Street
33166
Miami, FL
www.hotbrick.com
support@hotbrick.com

EUROPE

Generatorstraat 26
Hengelo (Ov), 7556 RC
Amsterdam - Netherlands
www.hotbrick.nl
support@hotbrick.nl

BRAZIL

Francisco Tramontano, 100
05686-010
São Paulo/SP
www.hotbrick.com.br
suporte@hotbrick.com.br

USA

7243 NW 54th Street
Miami, FL 33166
www.hotbrick.com
support@hotbrick.com

EUROPE

Generatorstraat 26
Hengelo (Ov), 7556 RC Amsterdam
Netherlands
www.hotbrick.nl

BRAZIL

Francisco Tramontano, 100
05686-010 – São Paulo/SP
www.hotbrick.com.br
suporte@hotbrick.com.br

How to use Virtual Server with the Hotbrick VPN 800/2

To insure that this procedure works, we are assuming that the appliance has already been configured and is working properly on the local network and the Internet.

This document may have illustrations that differ from your product. This is because of differences in various firmware versions.

If you have problems with this procedure, please contact support at Hotbrick's website:

www.hotbrick.com/support.asp.

The port binding to access the LAN common services, (such as WEB, FTP, DNS) is set on the "Virtual Server" page on the Hotbrick.

Other less common services can be configured on the "Custom Virtual Server" page.

Follow the examples below for both scenarios (VPN 800/2) :

Virtual Server:

- Access the GUI (Graphical User Interface) on the Hotbrick;
Click "Advanced Setup";
- Click "Virtual Server";
- Select the service that will be used and "Enable" it;
- Under "LAN IP Address", input the LAN IP address, example: The internal server IP 192.168.0.50;
- Under "Allowed Remote IP Range", specify the IP address or the Internet range that will access the server. (If it's not necessary to restrict the IP address to access this rule, set the range to 0.0.0.0~0.0.0.0);
- Click "Submit".

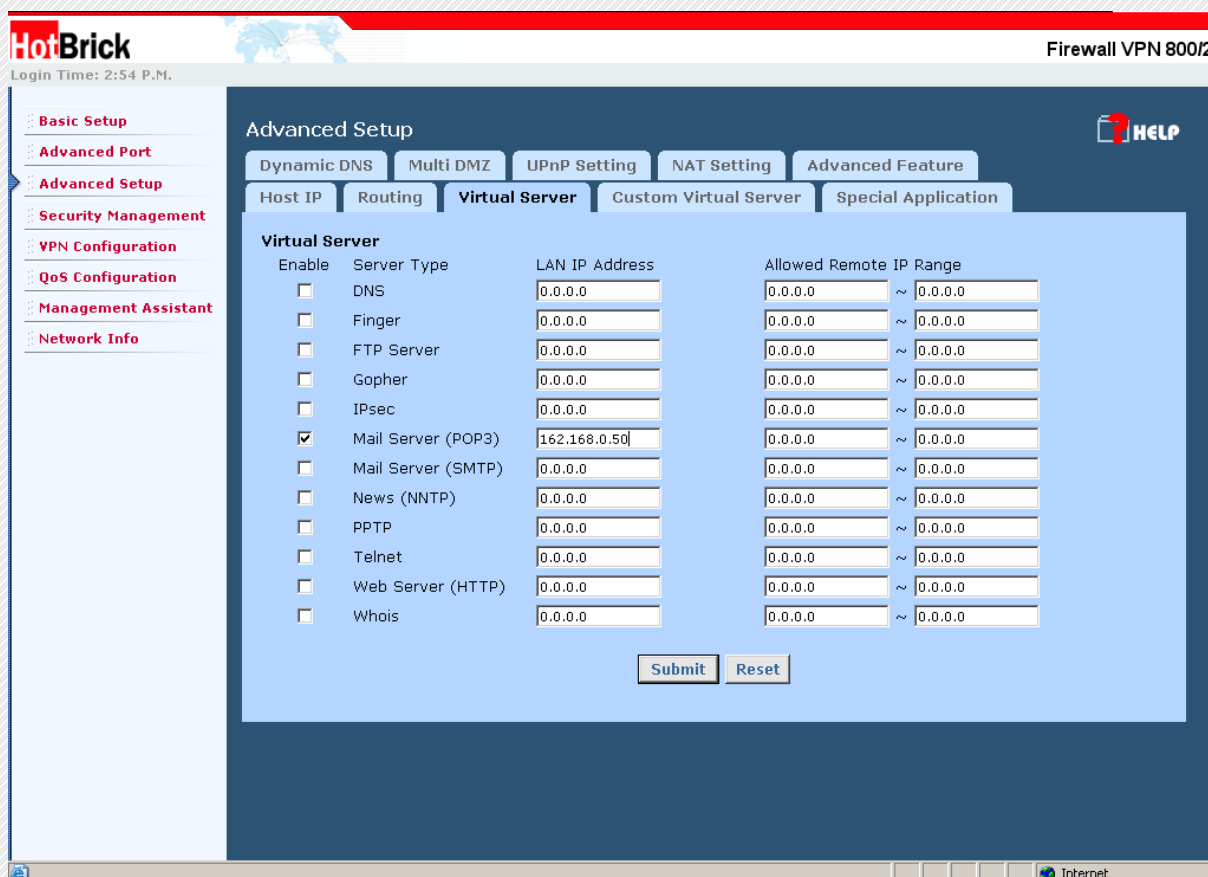


Fig. 1: Virtual Server Configuration

Custom Virtual Server:

- Access the GUI (Graphical User Interface) on the Hotbrick;
- Click "Advanced Setup";
- Click "Custom Virtual Server";
- Under "Custom Virtual Server Configuration", scroll down to "Custom Server Configuration" and input the Service name;
- Certify that "State" is checked with "Enable";
- Input the LAN IP address, example: Internal Server IP Address 192.168.0.50;
- Under "Protocol Type", select the protocol TCP or UDP;
- Under "Lan Port Range", input the port or the port Range that will be forwarded to the internal IP;
- Under "Wan Port Range", input the port or the port Range that will have access to the internet;
- Under "Interface Binding" choose WAN1, WAN2, or Both to assign which WAN connection will provide traffic for the custom service;
- Under "Allowed Remote IP Range", specify the IP address or the internet range, which will access the server;
- To finish, click "ADD".

Fig. 2: Custom Virtual Server Configuration